

proposal for gallery exhibit

## SINUS7 + CLAUSTROPHILIC ENCLOSURE #2

| A Collaborative installation by **KTANONYMOUS** |

proposed group = Enrico Pindari, Chris Borden, Lou Susi, Rob Millard, Kanarinka + Pirun of iKatun, Fred Kallus + others

| A quick note on the group and derivation of the project |

The proposed group of people forming **KTANONYMOUS** for this particular exhibition has not yet been confirmed. The project began with a conversation between Enrico Pindari + Chris Borden upon the taking down of EP's exhibit 'Metaphysics, Mystery and Magic' at the Tufts University Gallery | Aidekman Arts Center. Enrico mentioned to Chris that he wanted to create a piece involving a confessional. Questions and ideas went back + forth | and after further conversation + brainstorming about the idea between Chris Borden and Lou Susi, some further concepts were generated. This particular piece of the proposed installation regards 'Claustrophillic Enclosure #2' : the second in a series of at least three tight 'enclosures' [ the first CE was exhibited at a Mobius Artrage in November of 1995 ].

The other piece, entitled 'sinus7', will be a wall-based, new media + sculptured series similar to that seen in churches as a 'stations of the cross'. Each video piece will be contained by a box and covered by material that the viewer | participant will have to look through at a close proximity to watch the 'video monologue'. Further details to follow.

The other artists mentioned in the proposed group of co-conspirators | collaborators, will all be approached to lend their professional + artistic expertise to the project. Each can assist with creation of the actual physical artwork, virtual experiences and other technical aspects of the piece[s] to ensure superior craftsmanship + development to full completion of the artwork involved.

| **SINUS7** | part one of a 2-part gallery installation | wall-based room art |

This portion of the installation will hang on the gallery walls in the style of paintings. There will be 7 boxes mounted on the walls in an approximated, equidistant fashion. Each box will contain a 'video monologue' performed by Sinus Brady | database administrator + poet. Material appropriate to the topic of each 'video monologue' will cover the open viewing of each video, allowing for close-proximity viewing of each piece through the material. For example, if the topic of the piece is specifically about machinery or technology, the outer front face of the box will be made of found metal car parts flattened by traffic over the course of time. If the topic of the piece is about 'operation enduring email' [ Sinus' hands-on, anti-spam world police campaign ], the outer, front face of the box would approximate the look + feel of a computer-like device, mouse hanging down off of the box, perhaps a little webcam pointed out at the viewer. Other topics of Sinus' live 'stand-up [ no comedy ]' performances are listed in the 'entries' found at [sinusbrady.com](http://sinusbrady.com).

For the audio portion of the 'video monologues', 2 solutions are proposed :

Ultimately I would like to give each gallery goer a portable headset device that they wear for the duration of their stay in the space. As they move toward one of the 'video stations', the monologue that corresponds to that station's video would become louder + clearer [ hopefully some radio static or AM airwave effect would slowly clear up as the gallery goer approaches the



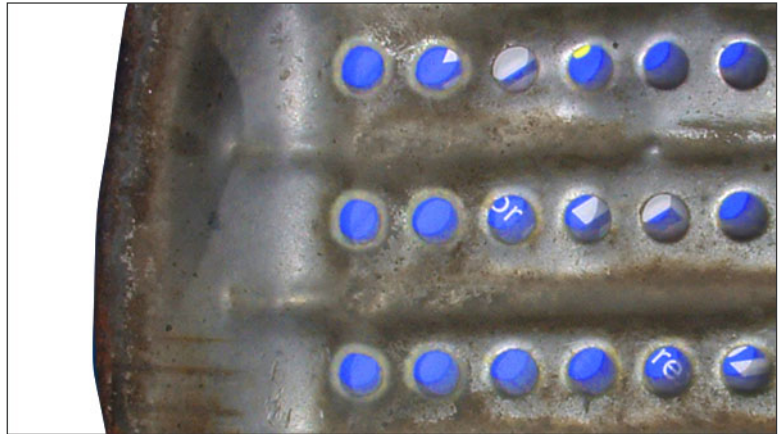
proposed face surface for 'commuter' monologue | station

station ]. As the viewer moves away from the station, that station's audio signal would begin to fade out or off [ incorporating an increase in static or airwave sound fx ]. When discussing my idea with Fred Kallus of the UML Media Department, he mentioned he might know the way to technically make this concept a reality.

The second solution, the fall-back plan [ three letter acronym = fbp ] would simply have a headset dangling from each wall-mounted box | sculpture | 'video monologue'. The gallery goer approaches, places the headphones over ears and listens to the 'video monologues' ala retail musicstore cd-listening stations.

Sinus Brady | database administrator + poet | is a character developed + performed by Lou Susi. Topics of his monologues include the following : database administration | poetry | back-end coding | three-tiered online application development + implementation | ufos | stalkers | email | the internet | spamming | current electronic media concerns + issues | reality vs cyberreality | café experiences | HT | officeplace happenings | public restroom experiences | alternative thought | 3D technology | various scientific developments | modern + classic literature | television + the media | llama breeding | kidnapping | + other bizarre conversation pieces.

Conceptually speaking, these wall-mounted 'stations' of the cross symbolically play like television stations. I would want to incorporate some intermediate swirling numeric logo affiliate with the number of the particular station. Besides the above mentioned found road metal, I would also want one piece to incorporate driftwood + other ocean-affiliated found objects, another { as previously mentioned } to use various office objects + | or computer parts + portions, any coffee 'video monologue' would appropriate materials such as large tea mugs, coffee beans + grounds, creamer + sugar shaker, etcetera + so on for other pieces ...



close-up detail of face surface for 'commuter' station | sinus7

## | **CLAUSTROPHILIC ENCLOSURE #2** | part two of a 2-part gallery installation | object-based art structures |

Claustrophillic Enclosure #2 would include 2 structures. The main piece is a confessional that resembles something between a true confessional, a photobooth and a time machine. The second piece would be a prayer bench for post-confessional penance performance.

### | The Confessional Booth |

The confessional portion of the CE would be either purchased from a nearby bankrupt church or fabricated by Enrico and others in the KT collaborative. The outside will have a professional, wooden structure w/ 3 apparent areas for human entrance. The middle portion [ where the priest traditionally resides ] would be filled with technological accoutrements to feed the other booths with the end-user | participant experience. Each of the 2 side booths would be equipped with many screens, and a comfortable interior. 2 participants are allowed inside the project for 2 minutes at a time. A light outside would signal the appropriate time to enter the confessional booths. Some other 'Dr Who'-ish lights may adorn the exterior front face of the structure. Some campy references to the heavens would decorate the top of the contraption : a radar-dish, TV bunny ears, and other references to technology that pulls data from the sky.



typical confessional booth exterior

Each booth would be furnished with a small sitting bench. The walls and bench would be upholstered with a red, velvet-like material. The entranceway to each booth would have a velvety green curtain to conceal the space during the participants' confessional sessions. The ceiling would have a video screen, at first showing an expansive view of a clear, starry night sky. The sky would transform slowly into a daylight, cloud-filled but shiny sky. Bright whiteness. Then as the 2 minute time limit approaches, the ceiling video would fade back to nighttime again, stars + all. At the end of 2 minutes, a sign over the curtained entryway would flash to indicate that the participant should leave the space and proceed to the prayer bench.

While inside the space, the end-user | participant would be able to : send email directly to God using a computer monitor and keyboard w/ mouse + all. Most email will bounce back from 'god.com' stating that 'God's email box is full right now, please try to email again at a later time'. The end-user can also chat w/ the angels to ask questions. A fully randomized chat system will be devised to approximate the experience a typical netizen might experience on yahoo or other like online experiences. Phrases like, 'what are you wearing?' , 'age, sex, weight' and other such typical questions or abbreviations will pop-up + | or go away. On the opposite side of these computer-based media, there will be a phone receiver for the participant to pick up. The phone will ring, 2 times only, and if the participant picks up they will hear a menu of options to choose from, 'Press 1 for God, Press 2 for Jesus, Press 3 for the Holy Ghost, Press 4 for Jim Coates, ... ' etcetera.

At approximately 1 minute into the end-user | participant experience, a monitor built toward the middle of the confessional would turn on + an 3D-animated priest would begin talking to the participant. The rendering of the priest would be a throw-back to the old fortune teller automatons one might still see in the video arcades of Salisbury Beach. The priest's name would be Father Zurlo, he would introduce himself, maybe give the sign of the cross to himself and the participant, and then he would begin confessing to the participant themselves. Father Zurlo might appear in an outdoor setting. The background scenery would be an expansive grassy field, with little beds of flowers, nuns walking by in their little gaggles down calm pebble pathways, birds and butterflies, and of course ... one little fly continually moving about on the upper right hand corner of the priest monitor [ almost as if the fly were on the outside, moving about on a screen window ].

As the 2 minutes begins to draw to a close, Father Zurlo will tell the viewer | user | participant what their prescribed contritional prayers will be and indicate the direction to the prayer station, found outside the confessional construction. All of the interior machines clip off abruptly and power down with appropriate sound fx. A light above the doorway indicates that the participant should leave the confessional booth and proceed to the prayer station.

#### | The Prayer Station |

The prayer station would consist of a kiosk of 2 monitors with red, velvet kneeling pads. The kiosk + station itself will also be adorned with satellite radar dishes + other campy references to skyward communications. The participant approaches the prayer station and will witness that the monitors are on 'stand-by' mode. The monitor will also instruct the end-user | participant to press 'start' when ready. A button 'start' mechanism will be readily apparent, one for each participant. Once start is pressed, the 'prayer karaoke' begins. A variety of song names will be listed for the end-user to choose from. They may choose 2 out of 20 'prayer | tunes' to pray | sing along with. Each 'prayer | tune' will be a recognizable pop song from the last 50 years with instructions muchlike 'Sung to the tune of 'Oh Mandy' performed by Barry Manilow, or 'Sung to the tune of 'I'm a Slave for You' by Britney Spears. Each chosen 'prayer | tune' will run like a typical karaoke video monitor, follow the bouncing ball text graphics with backdrop scenes and animations. After 2 songs are pray | sung, the monitor will give one of several messages such as 'You are forgiven. Have a nice day.' or 'You have achieved absolution. Please come again soon.' - something very customer service oriented, very retail + consumeristic.

Once the participant receives the final message, they are instructed that they can get up from the prayer station. The cycle is complete. The monitor returns to the 'stand-by' mode for the next end-viewer | participant.

#### | **KT CONTACT INFORMATION** | collaborative | further information |

For further information concerning either portion of the proposed 2-part installation work + exhibit, please contact :

Lou Susi : BXOS !terative! Inc. : [lou@bxos.com](mailto:lou@bxos.com) : 617.750.2922

I would be more than happy to supply any further information or materials to further our chances of bringing this | these projects to life at the University of Massachusetts at Lowell.

Thank you for your consideration.

Lou Susi